

Marriage Encounter



MATER DEI COMMUNITY

Website: www.materdeime.com

Telephone No. 723-0071 local 114

Community Primer

Name of Couple

ME Class No.

- FOREWORD -

Welcome to Mater Dei Marriage Encounter Community!

This is our gift to you. As you go over it, you take a glimpse of the “community” you soon would desire to be a part of.

Allow this primer to guide you towards a spiritual journey that could lead you to be couple and family for others.

Hopefully, this will prepare you lay a stronger spiritual foundation as “faithful servants in the vineyard of the Lord”

We invite you to come and walk with us.

Mater Dei M. E. Community

- CONTENTS -

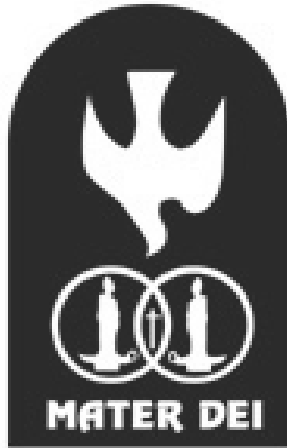
| | PAGE |
|--|------|
| Cover Page | |
| Foreword | 1 |
| Contents | 2 |
| I. Picture of Icon | 3 |
| II. Our Logo | 4 |
| III. Community Prayer | 7 |
| IV. Vision and Mission | 8 |
| V. Ancestry and Heritage | 9 |
| VI. Apostolic Organizational Structure | 15 |
| VII. General Policies and Guidelines | 16 |
| VIII. Spiritual Development Path (SDP) | 18 |
| IX. Spiritual Directors/Advisers | 19 |
| X. Servant-Leaders | 19 |
| XII. Location of Mater Dei Office & Violago Chapel) | 23 |
| XI. Spiritual Journey | 24 |

I. PICTURE OF OUR ICON

MATER DEI
(Mother of God)



II. OUR LOGO



A. The Candles

The two candles represent the husband and the wife. And, although they have been joined by marriage, the ME believes in and recognizes the uniqueness and worth of each person – that God created two distinct and separate individuals in His image and likeness.

The candles are lit because candles were created primarily for the purpose of giving off light. As a consequence of being lit, the candles will be consumed. So it is with the husband and wife. If they will fulfill their true mission and purpose in life, they must die unto themselves – they must endure suffering.

The lighting of the candles is the spouses' decision to love each other and represents the "P" stage of the ME Weekend. This is the encounter with self, recognizing and being aware of the life's purpose which is to be the image and likeness of God, with their own dignity and worth.

B. The Circles or Rings

1. Each circle represents the aura of light or ring of fire generated by each candle. When first lighted, the candle flame is not bright but as the wax melts and the candles grow shorter, the flame it generates sheds a larger aura of light.
2. And as the flickering flame grows stronger, as it consumes itself, it starts reaching out to and joins the aura of light shed by the other burning candle, which is also consuming itself, dying to self and reaching out to the other.
3. Where the circles of the light intersect, is the aura of greatest light, where it is the brightest. At this point, the source of the light can no longer be identified, as their lights have merged and become one. So as to who gave the greater light, can no longer be known, and at this point, it no longer matters, for both had reached out to the other in mutual acceptance, mutual understanding, total openness and mutual confidence;
4. There is closeness and oneness, and this is the point where there is no longer You nor I, but We. This is the second stage of the ME Weekend.

C. The Cross

When spouses give unselfishly of themselves to each other, when they daily make a decision to love, be loved, to heal and be healed, to die to self for the other, then they experience happiness through oneness and unity, in their Sacrament in accordance with the plan of God. And as sacrament to each other, they live their marriage spirituality aware of the continuous tracings of God present in their lives. This is the We and GOD stage of the ME weekend. For where there is love, there is God.

As their candles continue to burn and give more radiance, the aura of light, their couple power, reaches to encompass their children. As their flame grows stronger and brighter, it reaches out to others, and they become an open and apostolic-a couple-for-others. This is the fourth stage of the ME weekend – WE, GOD and COMMUNITY.

D. The Holy Spirit

Lighting the candles - dying to self each day, is not an easy task but can be a very painful and frustrating experience. Spouses need the Holy Spirit to enable them to develop a good and enriching relationship and continue to enliven and lift their lives.

E. The Color White signifies clarity and purity of the Immaculate Heart of Mary, our model and intercessor.

F. The Color Red is the color of the heart; the color of love. It is the color of the Sacred Heart of Jesus - the Man-for-others - our beacon and our light.

III. COMMUNITY PRAYER

*O Blessed Virgin Mary,
Our beloved Mater Dei,
we know that you are always mindful
of the many dangers and evils
which threaten our daily existence.
Look upon us with favor, our Mother,
and shield all of us with your protective mantle.
Guide us and sustain us, dear Mater Dei,
so that we may always live as true
sons and daughters of the Father.
O Virgin Mother, pray for us
that we may be transformed into
loving, caring and responsible
couples and families for others.
Help our Mater Dei Marriage
Encounter Community to enrich,
deepen and strengthen marriages
and family relationships
for the greater glory of God.*

Amen!

IV. COMMUNITY'S VISION & MISSION

VISION:

A COMMUNITY WITNESSING TO CHRIST'S GOSPEL OF RECONCILIATION IN INDIVIDUAL, CONJUGAL, FAMILY AND COMMUNITY LIFE.

MISSION:

TO BUILD A CHRIST-CENTERED COMMUNITY WHOSE MEMBERS ARE LOVING, CARING AND RESPONSIBLE COUPLES AND FAMILIES FOR OTHERS THROUGH PROGRAMS AND ACTIVITIES THAT WILL . . .

- > Enrich, deepen & strengthen marriage and family relationships***
- > Nurture spiritual growth***
- > Render outreach services***

V. ANCESTRY AND HERITAGE

Our community has a lineage uniquely our own. Our ancestry has a bloodline and a birthright befitting that of children of God. Our heritage is our pride and inspiration towards building a Christ-centered community.

Our heritage is rooted back to when the Apostolic Directorate of the Good Shepherd M. E. Community (GSMEC), four of whom were Lony Rhodora Bohol (Bukas Loob sa Diyos, Metro Manila Class 4), Romy Remy Lagman (GSMEC Class 16), Bill Ding Zamora (GSMEC Class 29), and Fr. Pablo Encinas, OP (Servants of the Holy Spirit), passed a board resolution on March 8, 1991 that would be the basis of our origin. The resolution in part, states:

“After a series of meetings of the present Apostolic Directorate, the last of which was held at the PSME Bldg. on March 1, 1991, it was unanimously decided that it is to the best interest of the community that two independent and autonomous groups be created to undertake apostolate work of the community as mandated by its corporate charter.”

“...for purposes of identification, the groups shall be known as Good Shepherd M.E. Community, Inc. A or GSMEC A and Good Shepherd M.E. Community, Inc. B or GSMEC B.”

Those who immediately joined GSMEC B became the first Apostolic Elders of our Community. They are: Lony Rhodora Bohol, Romy Remy Lagman, Vigue Nelly Ventura and Ray Sonia Zolina.

In the same month of March 1991, the Apostolic Elders together with equally committed members of our community conducted the first Planning Session which was held at the Dona Pilar Elementary School. Present were: Ben Elsa Palomo (Class #12), Vigue Nelly Ventura (Class #27), Lony Rhodora Bohol (BLD-MM Class # 4), Alex Melly Ado Class # 26), Romy Remy Lagman (Class # 16), Amang Lolit Mendiola (Class # 49), Domeng Dulce Baetiong (Class #26), Hope Ochie Galang (Class # 42), Bill Ding Zamora (Class # 29), Ray Sonia Zolina (Class # 26), Ding Susan Mayor (Class # 41), Willie Rose Montales (Class # 28) and Nes Chit Cruz (Class # 36).

The most important matter taken up during the first Planning session was the organization of GSMEC B's four (4) apostolates, namely: Marriage Encounter Apostolate, Family Encounter Apostolate, Spiritual Growth Apostolate and Outreach Apostolate. These apostolates were entrusted to Lony Rhodora Bohol, Vigie Nelly Ventura, Ray Sonia Zolina and Romy Remy Lagman, respectively.

Thereafter, forty-seven (47) other couples joined GSMEC B and other couples followed after some time.

During the early days when the group was discerning God's reason for allowing this event to happen, Fr. Alex Hubilla, SVD acted as spiritual adviser until Fr. Pablo Encinas, OP joined soon after to become our Spiritual Director.

The leadership of the community immediately proceeded to establish its goals, defining our vision and mission.

On April 5-7, 1991, our first ME Weekend (Class # 66B) was conducted at Las Brisas, Antipolo, Rizal. Two weeks later, on April 26-28, 1991, our first Family Encounter Weekend (Class # 16B) was held at the SVD Retreat House, Tagaytay City. Not long after, the Sons and Daughters Encounter (SADE) Weekend (Class # 4B) was held on May 24-26, 1991. The Ugnayan – a one (1) day marriage enrichment seminar for the underprivileged was conducted on a monthly basis.

In July 1991, Auxiliary Services was added to the four Apostolates and Ministries of the Community.

With the continuing growth of our community, Fr. Domie Guzman, SSP, who has also been providing pastoral guidance and spiritual deepening talks to members of our community, was invited to act as our second Spiritual Director in 1992.

On March 10, 1993, the Marriage Encounter Foundation of the Philippines (MEFP) passed a Board Resolution based on the decision of its founder and National Spiritual Director, Fr. Ruben M. Tanseco, SJ, and a portion of which states:

“After prayerful discernment I am convinced that a change of name by the Good Shepherd M.E. Community B will be more liberating for them, and more promising towards developing their own identity as a group. A change of name by Good Shepherd B brings a conviction of hope for a more promising future for them.....”

Thus, a dramatic process of name selection for our community was pursued.

Finally, on May 3, 1993, the name **MATER DEI MARRIAGE ENCOUNTER COMMUNITY**, as suggested by one of our Spiritual Directors, Rev. Fr. Pablo Encinas, OP, became the overwhelming choice. This was presented to the general membership for ratification and this is what we are called to this day.

In 1995, Worship Ministry and Community Life Apostolate were added to the Apostolates and Ministries of the Community.

On July 30, 1996, Mater Dei Marriage Encounter Community, Incorporated was registered with the Securities and Exchange Commission. Under its By-Laws, governance of the community which was reposed upon its Board of Directors composed of fifteen (15) couples was delegated to a body called “Director Couples” who then handled each of the seven (7) apostolate and ministries of the Community. All class shepherds acting as a representative assembly elected them every two (2) years.

Also in 1996, to honor the Blessed Mother, the Board of Directors, agreed to commemorate the founding of the Community every March 25 – the Feast of the Annunciation.

On July 10, 1997 as a result of the restructuring and realignment of the programs, the Director Couples relinquished their responsibility as heads of the Apostolate and Ministries in favor of “Head Couples”.

On January 5, 2001 the members ratified the Amended Articles of Incorporation and By-Laws wherein the number of Board of Directors was reduced from fifteen (15) to nine (9) couples and the functions and responsibilities of the Director Couples were merge with the Board of Directors.

On February 2, 2001, nine (9) couples who were elected by the members were: Lony Rhodora Bohol, Romy Remy Lagman, Yoyong Cora Mangalindan, Ding Susan Mayor, Barry Chriss Ortiz, Stan Bimbo Santos, Jun Adel Tamasacan, Rudy Remy Valentin and Bill Ding Zamora.

With the ever growing number of its graduates coming from various parishes in and outside of Metro Manila and so that it could provide a venue for apostolic action by these members in or nearer to their respective parishes, the community launched a program dubbed “Balik-Community”. The program was mainly intended to encourage the holding of prayer meetings in such parishes and get member-parishioners to attend them. Through this program, old members of the community were re-activated and from the same program later rose prayer groups that operated in various parishes such as the Sto. Nino Parish (Bulacan), Mater Divinae Gratiae (Caloocan City), Holy Cross Parish (Gen T. de Leon, Valenzuela), Christ the King (Llano, Caloocan City), Fatima (Meycauayan, Bulacan), Immaculate Conception (Dasmaringas, Cavite) and Sto. Rosario Parish (San Pedro, Laguna) among others.

Our community also helps Parish Priests organize their own parish-based M.E. groups through the initiative of its committed members in such parishes with the full backing of the Board of Directors. Examples of these are the following member-parishioners of the Christ the King Parish (Llano) at Vista Verde, Caloocan City currently known as the Mater Dei Christ the King (Llano) Chapter, the Banal na Sacramento Parish M.E. Community in Talipapa, Novaliches and the Holy Mother of God M.E. community of San Bartolome Parish also in Novaliches.

On the other hand, a number of Mater Dei members from Pasig, Cainta, Marikina and Antipolo areas also formed the Inang Diyos M.E. community after seeking the blessing of the leadership of the community. They now operate in these areas independently together and in cooperation with other M.E. groups.

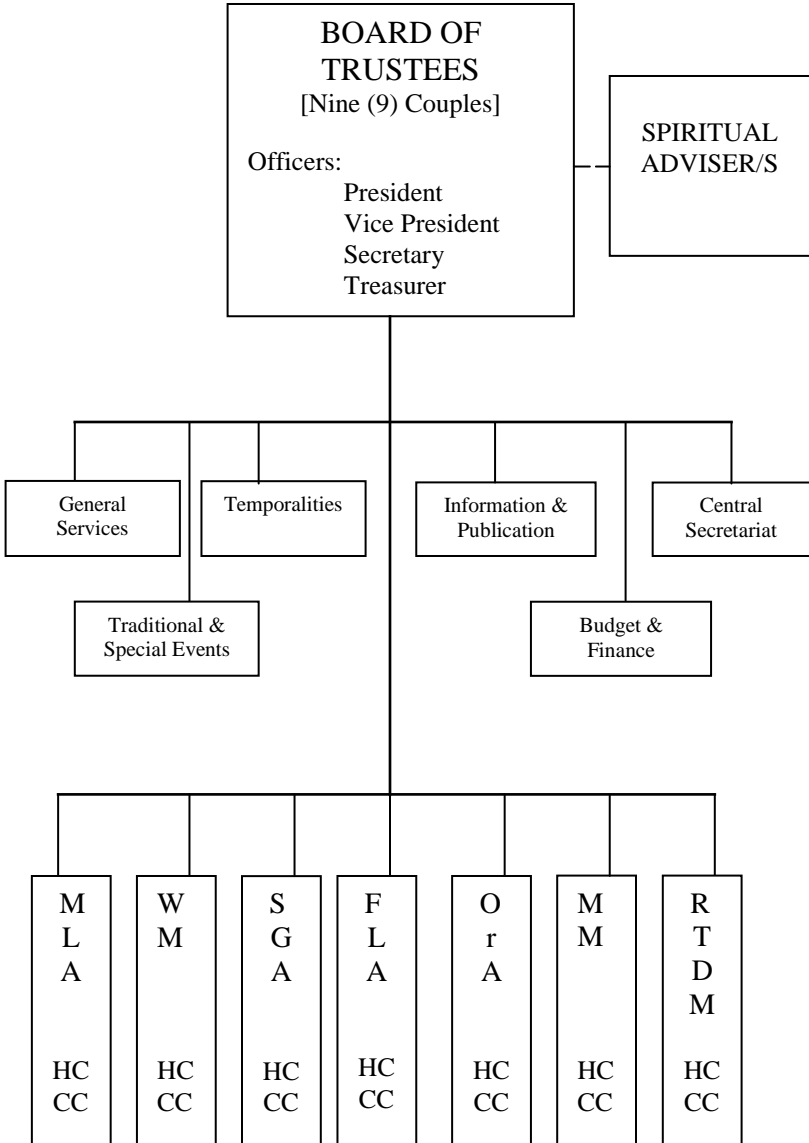
On March 2004, in view of its nature as a non-stock, non-profit corporation, the leadership decided to change the name “Board of Director” to “Board of Trustees”. Thereafter, a set of Board of Trustees was elected and installed to serve for the period from 2004 – 2007. They were: Samie Lulou Asia, Lony Rhodora Bohol, Pris Vicky Contreras, Neil Letty Gepilano, Boy Linda Gloria, Willie Rose Montales, Boy Nonie Quiambao, Jun Adel Tambasacan and Bill Ding Zamora.

The set of Board of Trustees who served from March 2007 until March 2010 were: Sam Luluo Asia, Ljay Emma Garcia, Pris Vicky Contreras, Rene Cherry Manuel, Stan Bimbo Santos, Tom Marian Co, Demet Rose Araniego, Lorenz Weng Tabilog and Oggie Thelma Mercado.

On March 5, 2010, a new set of Board of Trustees was elected and installed to serve from March 2010 until March 2013. They are: Ding Susan Mayor, Lorenz Weng Tabilog, Demet Rose Araniego, Jojie Fe Guballa, Nono Cecile Delgado, Ed Cora Depano, Noy Gay Manalo, Willie Rose Montales and Jun Adel Tambasacan.

As time goes by, her name will be honored in all community activities; *Marriage Encounter - Mater Dei Community* is our inspiration, our refuge and our second home.

VI. APOSTOLIC ORGANIZATIONAL STRUCTURE



VII. GENERAL POLICIES AND GUIDELINES

1. Members are encouraged to dress modestly during community activities;
2. The rule of one-solid-one-liquid shall be strictly observed in all Marriage and Family Encounter class deepening and other community meetings;
3. Drinking of liquor or any intoxicating beverages in any community activity is strongly discouraged;
4. Smoking is discouraged within the seminar area;
5. The community anniversary shall be celebrated every month of March of each year to coincide with the Feast of the Annunciation;
6. A format of directories to be given to participants of activities conducted by the Marriage Life Apostolate, Family Life Apostolate, Spiritual Growth Apostolate and Outreach Apostolate and other apostolates or ministries shall be as follows:
 - Page 1 - Community Name, Logo, Vision & Mission and Community Prayer.
 - Page 2 – Spiritual Advisers (with address and date of ordination) and Trustees (in alphabetical order with address, contact nos., wedding anniversary).
 - Page 3 - Apostolate which conducted the seminar, title of seminar, date and venue and Directory of said Apostolate.
 - Page 4 - Directory of participants (in alphabetical order, address, wedding date & contact No.)
 - Page 5 - Names of resource person/speakers
7. Marriage Encounter and Family Encounter classes who have finished their 10th class deepening session are encouraged to sponsor an outreach activity or apostolic work with pre-identified beneficiaries in coordination with the Outreach Apostolate (OrA);
8. Only one (1) major activity should be held at any one time. If two or more major activities are to be held simultaneously, prior approval of the Board of Trustees should be obtained;
9. Requests for supplies and materials should be coursed through the Central Secretariat;
10. The annual election of officers of the community, by the Board of Trustees, shall be during the regular meeting of the Board of Trustees for the month of April or immediately thereafter.

11. Soon after the installation, the servant leaders and workers shall be informed by the Board of Trustees as regards the various programs and activities of the community.
12. There shall be a quarterly meeting between the Board of Trustees and the Head Couples.
13. The planning session for yearly community activities shall be held in the month of October and the Head Couples should submit their Pre-Planning Report Form on or before the 1st Friday of September to the Secretary;
14. Any change in existing programs, policies, and organizational structure of apostolates and ministries should be with the prior approval of the Board of Trustees;
15. Solicitation of funds from non-members for and in the name of the community should be with the prior approval of the Board of Trustees;
16. Cash donations/pledges in all community activities shall be reflected in the Financial Report for said activity;
17. All love offerings received during a particular activity, except those received during Friday Prayer Meetings, must be turned over to the Treasurer or their duly authorized representative during the Prayer Meeting immediately after every activity;
18. The Financial Report of an ME Weekend should be signed by the class treasurer, duly noted by class shepherd, and approved by the head couple of the Marriage Life Apostolate. Liquidation Reports of apostolates/ministries must bear the signature of chair couple and duly approved by the head couple of the apostolate/ministry;
19. The family of a deceased member of the community shall be entitled to burial assistance;
20. A copy of the community primer shall be given to all graduates soon after their MEWS;

VIII. SPIRITUAL DEVELOPMENT PATH (SDP)

(Approved on May 6, 2006)

I. ASPIRANCY PROGRAM [1st – 4th month]

1. Point of Entry – MEWS (MLA/Sponsoring Class)
2. WPG – Welcome of new encountered couples (WM/MLA)
3. 1st Class Deepening Session – “Our Couple Love” (Team Couple)
4. Orientation Workshop:
 - *General Information: (BOT)
 - >The Roman Catholic & Apostolic Church
 - >MDMEC’s Vision/Mission
 - >Organizational Structure & Programs
 - >Spiritual Development Path (I-V)
 - >Other BOT related activities
 - *Sponsorship of ME Weekend: (MLA-HC/CC: MEWS)
5. 2nd Class Deepening Session – “Focus on Feelings” (Team Couple)
6. Class Business Meeting: MLA-HC/CC: **Shepherding/Deepening**
 - *Recruitment update, material and financial preparations
7. ME-LSS . . . with talk on Mary, “Mater Dei” – Jan/Mar/Jul/Sep (SGA)
8. Sponsorship of an ME Weekend

II. MEMBERSHIP PROGRAM [5th to 12th Month]

9. ME Deepening Series (8 remaining monthly deepening sessions)
10. Basic Talk on Gospel Christology (WM)
11. Basic Seminar/Talk on Gospel Mariology (SGA/WM/RTDM)
12. ME-MSS - (*June & December*) (SGA)
 - *Commissioning Rites as Full-pledge member

III. WORKERS’ FORMATION PROGRAM [1st year and On-Ward]

13. Talk on Basic Attitudes for Congregational Work on
Ministry and Community – (ELDERS/BOT)
14. Enrollment into Apostolates/Ministries-Workers Installation - (*July*)
15. Orientation & Equipping Seminars-Workers Orientation - (*July*)
16. Basic Seminar on Prayer w/ Writing Workshop (RTDM/WM)
17. Basic Seminar on Sacred Scripture (SGA/RTDM)
18. Workers’ Retreat
Theme: “Washing of the Feet”; (SGA/WM)

IV. SHEPHERDS FORMATION PROGRAM [1st year and on-ward]

19. Shepherds’ Equipping Seminar (RTDM/MLA)

V. BASIC ON-GOING FORMATION PROGRAM (Continuing)

20. Weekly Prayer Gathering (every Friday 7:30 pm)
21. Intercessory Prayer – every Monday

IX. SPIRITUAL ADVISERS

FR. PABLO M. ENCINAS, O.P.

Colegio de San Juan de Letran
Calamba, Laguna
Ordination: April 03, 1982

FR. DOMIE GUZMAN, SSP

St. Paul Seminary
St. Paul Road., Makati City
Ordination: April 03, 1988

X. SERVANT-LEADERS

March 1991-1992 **Apostolic Directorate**

- > Lony Rhodora Bohol – Director Couple for:
Marriage Encounter Apostolate
- > Romy Remy Lagman – Director Couple for:
Outreach Apostolate
- > Vigie Nelly Ventura – Director Couple for:
Family Encounter Apostolate
- > Ray Sonia Zolina – Director Couple for:
Spiritual Growth Apostolate

July 1991 - Apostolic Directorate (Elders) appointed Ed Cora Depano as Director Couple for Auxiliary Services

1993-1994 **Director Couples /Spiritual Director**

- Lony Rhodora Bohol – Director Couple for:
Marriage Life Apostolate
- Ray Sonia Zolina – Deputy Director Couple for:
Spiritual Growth Apostolate
- Vigie Nelly Ventura – Director Couple for:
Family Life Apostolate
- Romy Remy Lagman – Director Couple for:
Outreach Apostolate
- Ed Cora Depano – Director Couple for:
Auxiliary Services
- Fr. Pablo Encinas – Spiritual Director for:
Spiritual Growth

| | | |
|------|---|---|
| 1995 | Bill Ding Zamora Jun Adel Tambasacan | - Director Couple for: Community Life Apostolate - Director Couple for: Worship Ministry |
|------|---|---|

1995-1998 - **Director Couples**

| | |
|--|---|
| Lony Rhodora Bohol Ray Sonia Zolina Vigie Nelly Ventura Romy Remy Lagman Bill Ding Zamora Jun Adel Tambasacan Ed Cora Depano | -Secretary Couple '95 -Presiding Couple '96-'97 -Secretary Couple '97 - Presiding Couple '98 |
|--|---|

1998 - **Director Couples**

| | |
|---|--|
| Lony Rhodora Bohol Ed Cora Depano Romy Remy Lagman Ding Susan Mayor Vigie Nelly Ventura Jun Adel Tambasacan Bill Ding Zamora Gonio Remy Yorobe | -Secretary Couple; -Vice President Couple Dec '98 -Presiding Couple -Treasurer Couple (appointed) |
|---|--|

1999 – 2001 - **Board of Directors**

| | |
|---|--|
| Lony Rhodora Bohol Romy Remy Lagman Ding Susan Mayor Jun Adel Tambasacan Vigie Nelly Ventura Gonio Remy Yorobe Bill Ding Zamora | -Secretary Couple '99; - -President Couple '00 -Presiding Couple '99 |
|---|--|

2001 (January) - **Corporate Board of Directors**

Lony Bohol – President of Corporation
(SEC Registration)
Ben Bernardo
Roc Bulacan
Pel Ciriaco
Jojie Guballa
Ding Mayor
Stan Santos
Jun Tambasacan
Rudy Valentin
Bill Zamora
Yoyong Mangalindan – Corporate Secretary

2001-2004 – **Board of Directors**

| | |
|-------------------------|-------------------------|
| Lony Rhodora Bohol | -Secretary '02-03 |
| | -President '03-04 |
| Romy Remy Lagman | -President '01-02 |
| Yoyong Cora Mangalindan | -Secretary '01-'02 |
| Ding Susan Mayor | -Vice President '02-03 |
| | -Secretary '03-'04 |
| Barry Chriss Ortiz | |
| Stan Bimbo Santos | |
| Jun Adel Tambasacan | -Treasurer '01-'04 |
| Rudy Remy Valentin | |
| Bill Ding Zamora | -Vice President '01-'02 |
| | -President '02-'03 |
| *Neil Letty Gepilano | -Vice President '03-'04 |
| *Oggie Thelma Mercado | |
| *Freddie Miriam Santos | |

**Elected by the Board of Trustees on March 2003 to fill the position vacated by Romy Remy Lagman, Barry Chriss Ortiz and Stan Bimbo Santos due to their resignation.*

2004-2007 – Board of Trustees

| | |
|----------------------|-------------------------|
| Sam Lulou Asia | -Secretary '04-'06 |
| | -President '06-'07 |
| Lony Rhodora Bohol | -President '05-'06 |
| | -Secretary '06-'07 |
| Pris Vicky Contreras | -Treasurer '05-'07 |
| Neil Letty Gepilano | -Vice President '04-'07 |
| Boy Linda Gloria | |
| Willie Rose Montales | |
| Boy Nonie Quiambao | |
| Jun Adel Tambasacan | -Treasurer '04-'05 |
| Bill Ding Zamora | -President '04-'05 |

****Oggie Thelma Mercado**

***Elected by the Board of Trustees on March 2006 to fill the position vacated by Willie Rose Montales due to their resignation for health reason.*

2007-2010 - Board of Trustees

| | |
|----------------------|-------------------------|
| Sam Lulou Asia | -President '07-'10 |
| Pris Vicky Contreras | -Treasurer '07-'10 |
| Lj Emma Garcia | -Vice President '07-'10 |
| Rene Cherry Manuel | -Secretary '07-'10 |
| Oggie Thelma Mercado | |
| Stan Bimbo Santos | |
| Lorenz Weng Tabilog | |
| Demet Rose Araniego | |
| Tom Marian Co | |

2010 – 2013 – Board of Trustees

| | |
|----------------------|----------------------|
| Ding Susan Mayor | - President '10 |
| Loren Weng Tabilog | - Vice President '10 |
| Demet Rose Araniego | - Treasurer '10 |
| Jojie Fe Guballa | - Secretary '10 |
| Nono Cecille Delgado | |
| Ed Cora Depano | |
| Noy Gay Manalo | |
| Willie Rose Montales | |
| Jun Adel Tambasacan | |

XI. LOCATION SKETCH

Mater Dei Marriage Encounter Community Office
and Viologo Chapel (Weekly Prayer Gatherings)

